



DESIGNYOURCAPS

REFERENCE GUIDE

BASEBALL



**BROOKLYN_101***Plastic Snapback*

- 6 Panels
- Cotton / Mesh

**BROOKLYN_102***Metal Buckle*

- 6 Panels
- Cotton

**BROOKLYN_103***Metal Buckle*

- 6 Panels
- Microfiber

**BROOKLYN_104***Metal Buckle*

- 6 Panels
- Perforated Microfiber

**BROOKLYN_105***Metal Buckle*

- 6 Panels
- Suede



BROOKLYN_106

CAP SIZE	IN	CM
7	22	58.8
7 1/8	22 3/8	56.8
7 1/4	22 3/4	57.7
7 3/8	23 1/8	58.7
7 1/2	23 1/2	59.6
7 5/8	23 7/8	60.6
7 3/4	24 1/4	61.5
7 7/8	24 5/8	62.5
8	25	63.5

- 6 Panels
- Cotton / Flex Mesh



BROOKLYN_107

CAP SIZE	IN	CM
7	22	58.8
7 1/8	22 3/8	56.8
7 1/4	22 3/4	57.7
7 3/8	23 1/8	58.7
7 1/2	23 1/2	59.6
7 5/8	23 7/8	60.6
7 3/4	24 1/4	61.5
7 7/8	24 5/8	62.5
8	25	63.5

- 6 Panels
- Cotton / Acrylic Wool Spandex



BROOKLYN_108

Plastic Snapback

- 6 panels
- Suede / Mesh

TRUCKER



**KNOX_201***Plastic Snapback*

- 5 Panels
- Low front 3 1/4 in
- Cotton / Mesh

**KNOX_202***Plastic Snapback*

- 5 Panels
- Low front 3 1/4 in
- Cotton

**KNOX_203***Plastic Snapback*

- 5 Panels
- Low front 3 1/4 in
- Suede / Mesh

**KNOX_204***Plastic Snapback*

- 5 Panels
- Low front 3 1/4 in
- Suede

**KNOX_205***Plastic Snapback*

- 5 Panels
- Low front 3 1/4 in
- Microfiber / Mesh

**KNOX_206***Plastic Snapback*

- 5 Panels
- Low front 3 1/4 in
- Microfiber

**KNOX_207***Plastic Snapback*

- 5 Panels
- Low front 3 1/4 in
- FVC Microfiber + Lazed holes

**KNOX_208***Plastic Snapback*

- 5 Panels
- Low front 3 1/4 in
- Corduroy / Mesh

**KNOX_209***Plastic Snapback*

- 5 panels
- Low front 3 1/4 in
- Corduroy

**KNOX_210***Plastic Snapback*

- 5 panels
- Low front 3 1/4 in
- Foam padded

**KNOX_211***Plastic Snapback*

- 5 panels
- Low front 3 1/4 in
- Suede / Mesh
- Suede stripes on sides

**KNOX_301***Plastic Snapback*

- 5 Panels
- High front 3 1/2 in
- Cotton/Mesh

**KNOX_302***Plastic Snapback*

- 5 Panels
- High front 3 1/2 in
- Cotton

**KNOX_303***Plastic Snapback*

- 5 panels
- High front 3 1/2 in
- Suede / Mesh

**KNOX_304***Plastic Snapback*

- 5 Panels
- High front 3 1/2 in
- Suede

**KNOX_305**

Plastic Snapback

- 5 Panels
- High front 3 1/2 in
- Cotton / Mesh
- Cotton stripes on sides

DAD HAT





VENICE_401

Metal Buckle

- 6 Panels
- Cotton



VENICE_402

Metal Buckle

- 6 Panels
- Microfiber



VENICE_403

Velcro

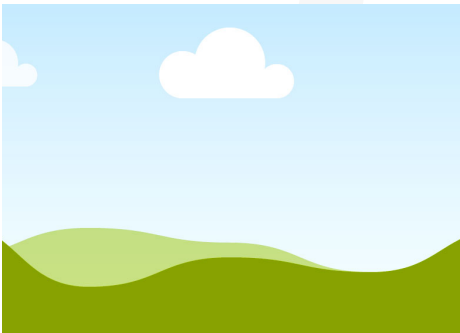
- 6 Panels
- Perforated Microfiber



VENICE_404

Metal Buckle

- 6 Panels
- Corduroy



VENICE_405

Metal Buckle

- 6 panels
- Suede

FLAT VISOR



**BRONX_501***Plastic Snapback*

- 6 Panels
- Cotton / Mesh

**BRONX_502***Plastic Snapback*

- 6 Panels
- Cotton (sublimation)

**BRONX_503***Plastic Snapback*

- 6 Panels
- Suede

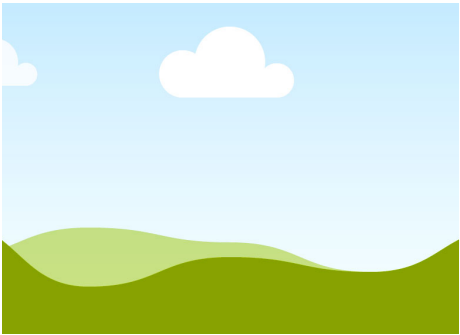
**BRONX_504***Plastic Snapback*

- 6 Panels
- Spandex
- Spandex sweat band

CAP SIZE	IN	CM
7	22	58.8
7 1/8	22 3/8	56.8
7 1/4	22 3/4	57.7
7 3/8	23 1/8	58.7
7 1/2	23 1/2	59.6
7 5/8	23 7/8	60.6
7 3/4	24 1/4	61.5
7 7/8	24 5/8	62.5
8	25	63.5

**BRONX_505**

- 6 Panels
- Spandex
- Spandex sweat band
- Special round flat visor



BRONX_506

Plastic Snapback

- 6 Panels
- Suede / Mesh

BUCKET



**GALWAY_701**

Not Reversible

- Narrow brim
- Cotton
- Microfiber

**GALWAY_702**

Reversible

- Have design on both side
- Narrow brim
- Cotton
- Microfiber

**GALWAY_703**

Reversible

- 1 Side Terry Fleece
- 1 Side smooth Kate fabric

**GALWAY_704**

Not reversible

- Wide brim
- Cotton
- Microfiber

**GALWAY_705**

Reversible

- Have design on both side
- Wide brim
- Cotton
- Microfiber

**GALWAY_706**

Not reversible

- Medium brim
- Nylon
- Tighten chin straps

BEANIES



**VERBIER_601**

- Acrylic
- Bom or not
- Flap or not
- H=9 cm flap
- W=20 cm crown
- H=30 cm crown
(when flap not folded)

**VERBIER_602**

- Acrylic
- Bom or not
- Flap or not
- H=7 cm flap
- W=25 cm crown
- H=30 cm crown
(when flap not folded)

**VERBIER_603**

- Acrylic
- Bom or not
- Flap or not
- H=5 cm Flap
- W=21.5 cm crown
- H=20.5 cm crown
(when flap not folded)

OTHERS



**BONDI_101***Plastic Snapback*

- 5 Panels trucker without buckram
- Cotton

**BONDI_102***Plastic Snapback*

- 5 Panels trucker without buckram
- Corduroy

Plastic Snapback

- 5 Panels trucker without buckram
- Microfiber

BONDI_103*Plastic Snapback*

- 5 Panels trucker without buckram
- Suede

BONDI_104*Plastic Snapback*

- 5 Panels trucker without buckram
- Nylon

**BONDI_105**



ASCOT_801

Velcro

- Cotton



ASCOT_802

Velcro

- Microfiber



ASCOT_803

Velcro

- Suede



MARATHON

Plastic Clip Closure

- 5 Panels / camp shape
- Microfiber



BEL AIR

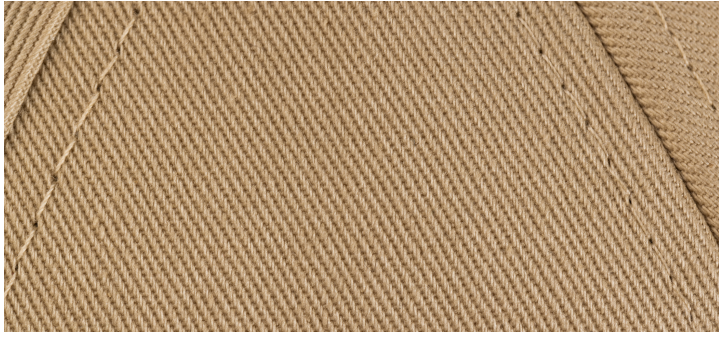
Metal Buckle

- 5 Panels / camp shape
- Cotton
- Flat visor

FABRICS

OVERALL MATERIAL COMPOSITION

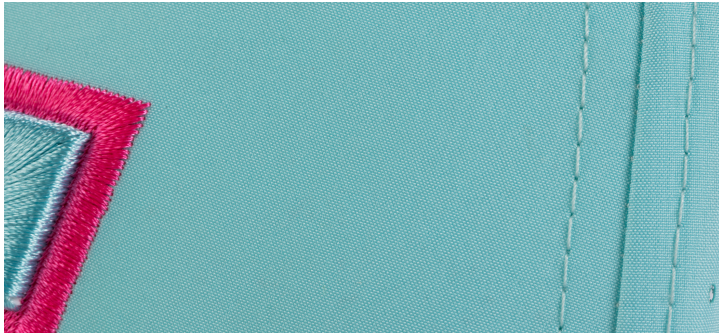


**COTTON**

Basic colors in stock:

Black, White, Navy, Grey, Red

Other colors: on request / depends on the quantity

**MICROFIBER**

Basic colors in stock:

Black, White, Navy, Grey, Red

Other colors: on request / depends on the quantity

**SUEDE**

Basic colors:

Grey, Black

Other colors on request

**NYLON**

Black

Other colors on request

**CORDUROY**

Colors on request

CLOSURES

BACK-LOCK TECHNOLOGY



**PLASTIC SNAPBACK**

Available for Cotton, FVC and Suede fabric materials

**METAL BUCKLE (STANDARD)**

Black or metal color (silver)

**METAL BUCKLE (SPECIAL)**

Metal color (silver)

**PLASTIC BUCKLE**

Black

**VELCRO**

*All the colors
(Loop & hook in either black or white)*

LOGO STYLE

EMBROIDERIES, PRINTS, AND MATERIALS





3D EMBROIDERY



FLAT EMBROIDERY



LIGHT 3D EMBROIDERY



FELT OR COTTON PATCH



GLITTER PATCH



SUBLIMATION PATCH



WOVEN PATCH (MINIMUM OF 100 PCS)



GRADIENT EMBROIDERY



SUBLIMATION



**SCREEN PRINT
ON SPECIAL REQUESTS
(ONLY WITH VECTOR LOGOS)**



LEATHER PATCH



**EMBOSSED
(MOQ 300PCS,
SMALL CHARGES FOR MOLD)**



**CHENILE PATCH
(MOQ 300PCS, SMALL
CHARGES FOR SAMPLE)**



**SILICONE PRINT
EXTRA COST FOR THE MOLD
(MINIMUM OF 500 PCS)**

LOGO POSITION

PLACEMENT TERMINOLOGY





ON THE FRONT



ON THE VISOR



UNDER THE VISOR



HALF MOON (PATCH ON MESH)



ON THE SIDE (PATCH ON MESH)



PRINT INSIDE THE CAP (TRUCKER ONLY)



ON THE CLOSURE STRAP



CONNECTED FRONT AND VISOR

SPECIALS

DEPENDS ON THE QUANTITY

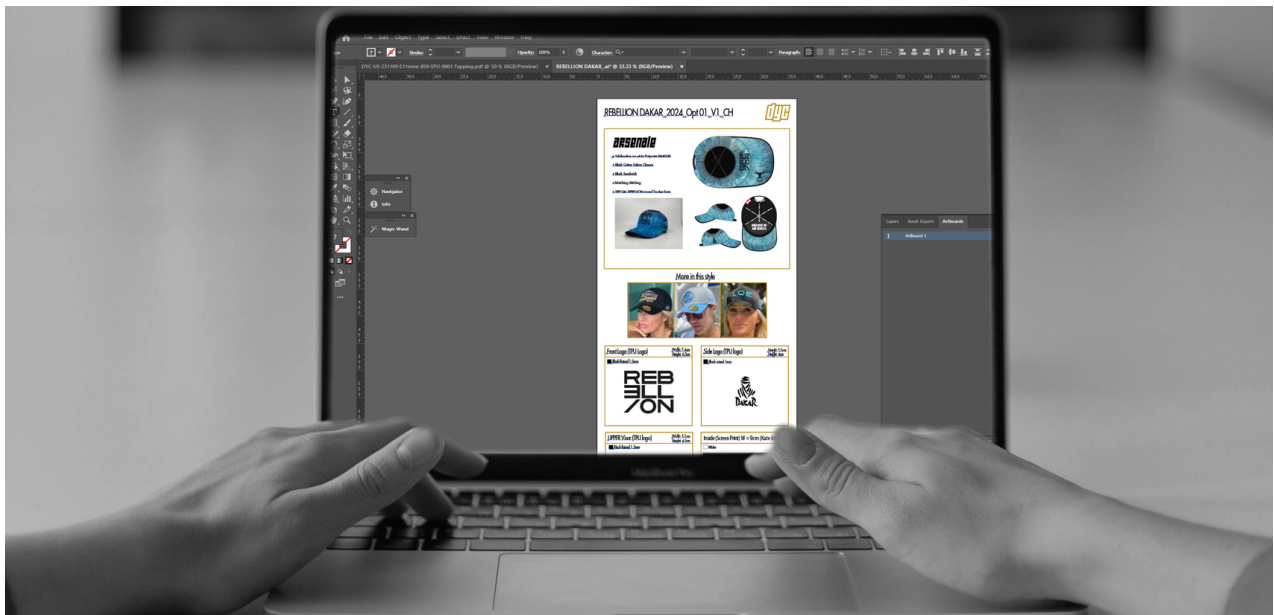
**STONED SCRATCHED****WASHED COTTON****VISOR'S FLAG****SPECIAL CLOSURES (GRAVED OR EMBOSSED)****LEATHER VISOR / ABOVE****SCREEN PRINT TAPPING****METAL BUTTON****ROPE**

**INSIDE LABEL**

PROCESS

ORDER MILESTONE AND PHASES





1. MOCKUP



2. PRE-PRODUCTION SAMPLE



3. PRODUCTION